

Mercedes-Benz Arocs SANY SY67-RZ6-200 Concrete Pump

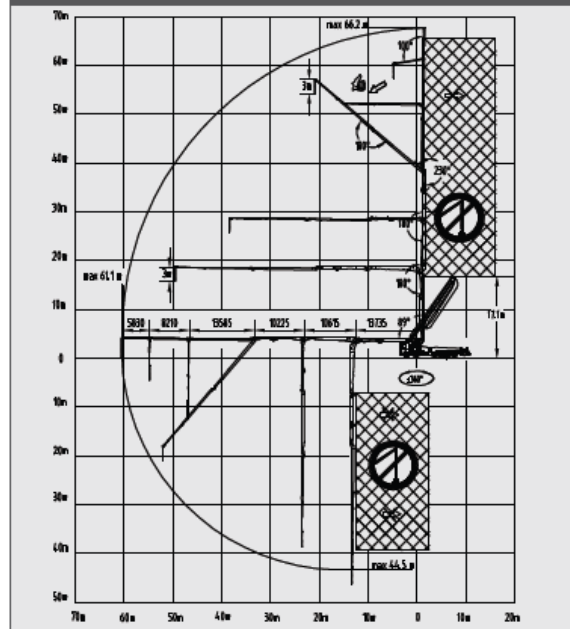
Brand	Mercedes-Benz Arocs
Type	Arocs
Build	SY67 RZ6-200
Engine	EURO6 Diesel
Gearbox	Automatic
Year of Builth	2024
Remarks	Only available for rental Steel rims Climate control Rear view camera Instructions available on request
Documents	Dutch license plates Full specifications available on request.



Technical data

Boom	Folding system	6-arm RZ
	Vertical reach	66.2 m
	Horizontal reach	61.1 m
	Reach depth	44.5 m
	Unfolding height	17.1 m
	End hose length	3 m
Support	Outrigger spread front	12.5 m
	Outrigger spread rear	15.1 m
Dimensions	Overall length	16.6 m
	Width	2.55 m
	Height	4.0 m
Core pump	Output	160 m ³ /h
	Pressure	85 bar
	Strokes/min	26
	Delivery cylinder Ø	260 mm
	Stroke length	1900 mm

Reach diagram



Support variants

