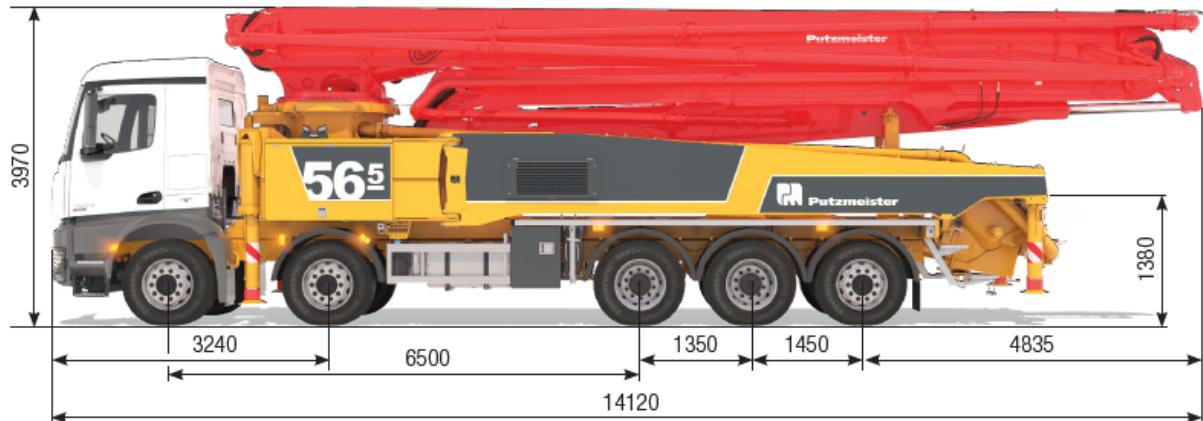


Mercedes-Benz Arocs 56-5.16H Performance Line Concrete Pump

Brand	Mercedes-Benz Arocs
Type	Arocs
Build	Putzmeister 56-5.16H
Engine	EURO6 Diesel
Gearbox	Automatic
Year of Builth	2024
Remarks	Only available for rental Steel rims Climate control Rear view camera Instructions available on request
Documents	Dutch license plates Full specifications available on request.



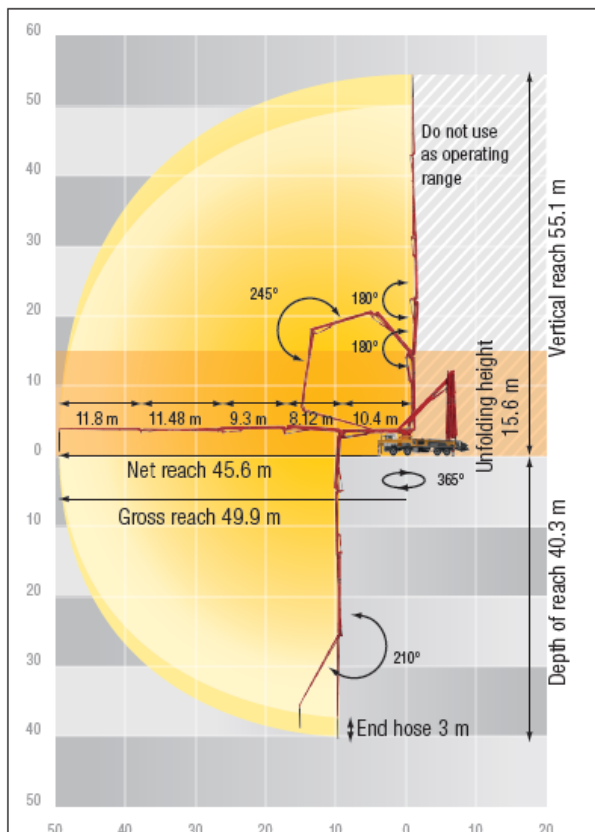
Technical data

Boom M 56-5		
Sections		5
Reach height	m	55.1
Horizontal reach	gross	m 49.9
	net	m 45.6
Reach depth max.	m	40.3
Unfolding height	m	15.6
End hose length	m	3
Folding system		RZ
Delivery line		DN 125

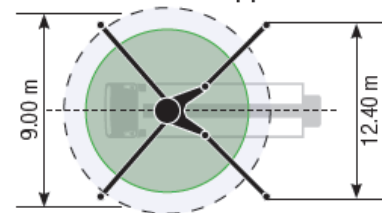
Pump		BSF	.16 H	.17 ILS	.19 iLS
Rod side	Output	m³/h	160	-	-
	Delivery pressure	bar	85	-	-
	Strokes	1/min.	31	-	-
Piston side	Output	m³/h	108	170	190
	Delivery pressure	bar	130	85	85
	Strokes	1/min.	21	27	30
	Delivery cylinder	Ø mm	230	250	250
	Stroke	mm	2100	2100	2100

*) Delivery line boom max. 85 bar.
All data maximum theoretical.

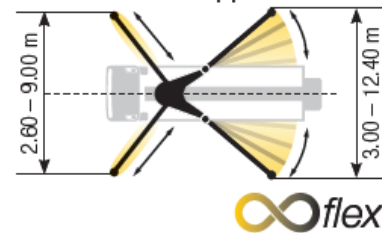
BSF 56-5 Reach information diagram, Support



Standard – Full support



iSC – Flexible support



Dimensions can differ depending on configuration.
Support width based on center of support leg.

